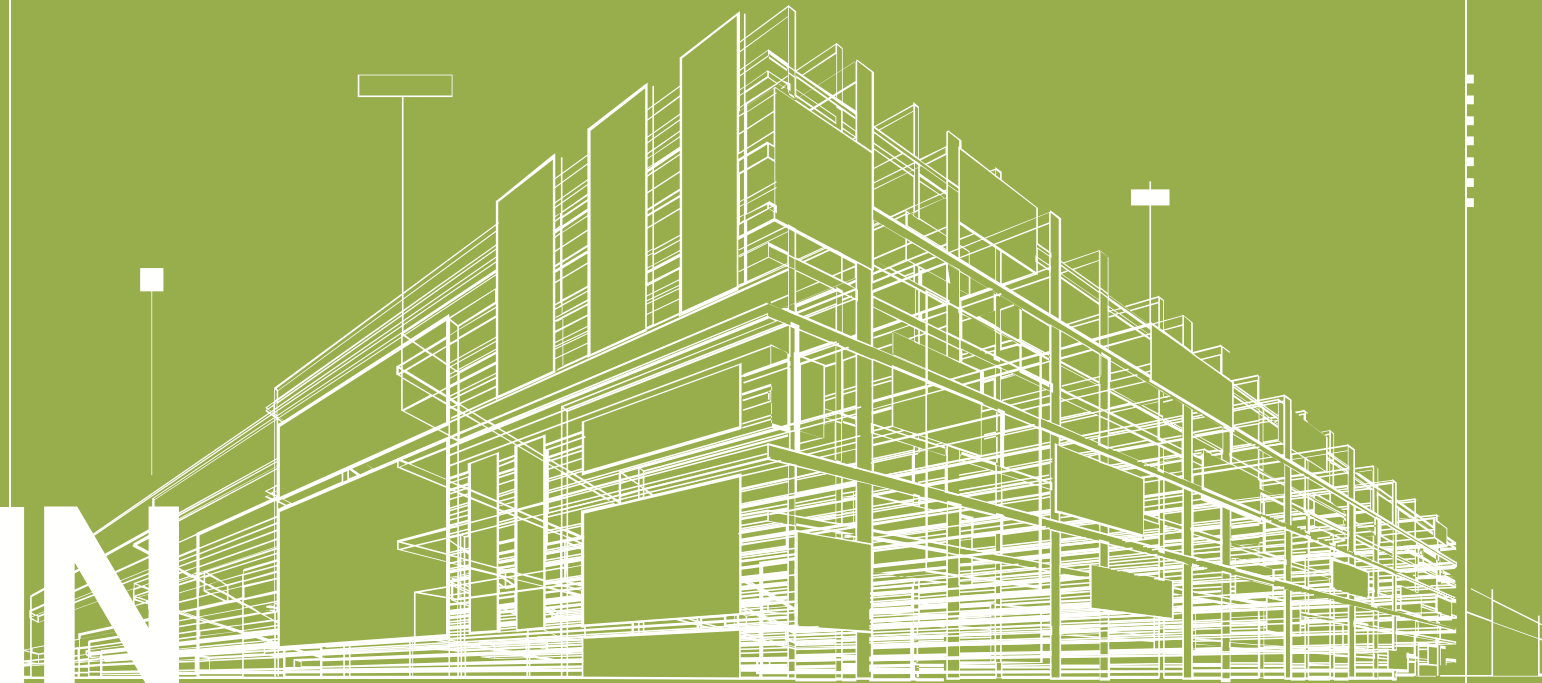


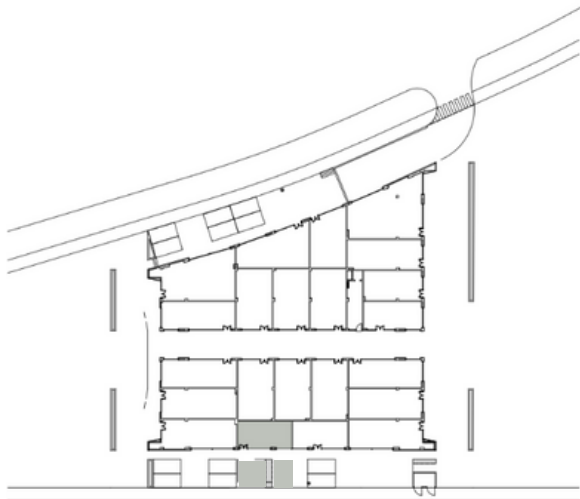
Plano Comercial

ZAUDIN BOULEVARD



Zaudin Boulevard

Superficie total construida	96.77m²
Planta Baja	44.70m²
Planta Alta	52.07m²
Superficie útil	82.35m²
S. construida terraza planta baja	28.66m²



Planta Alta



Planta Baja

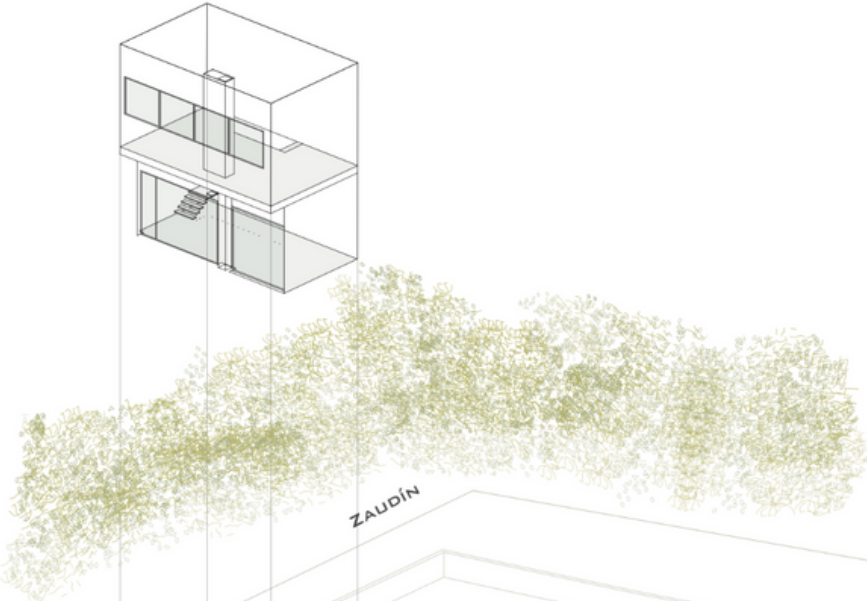


Escala 1:100
1 m 2 m 5 m

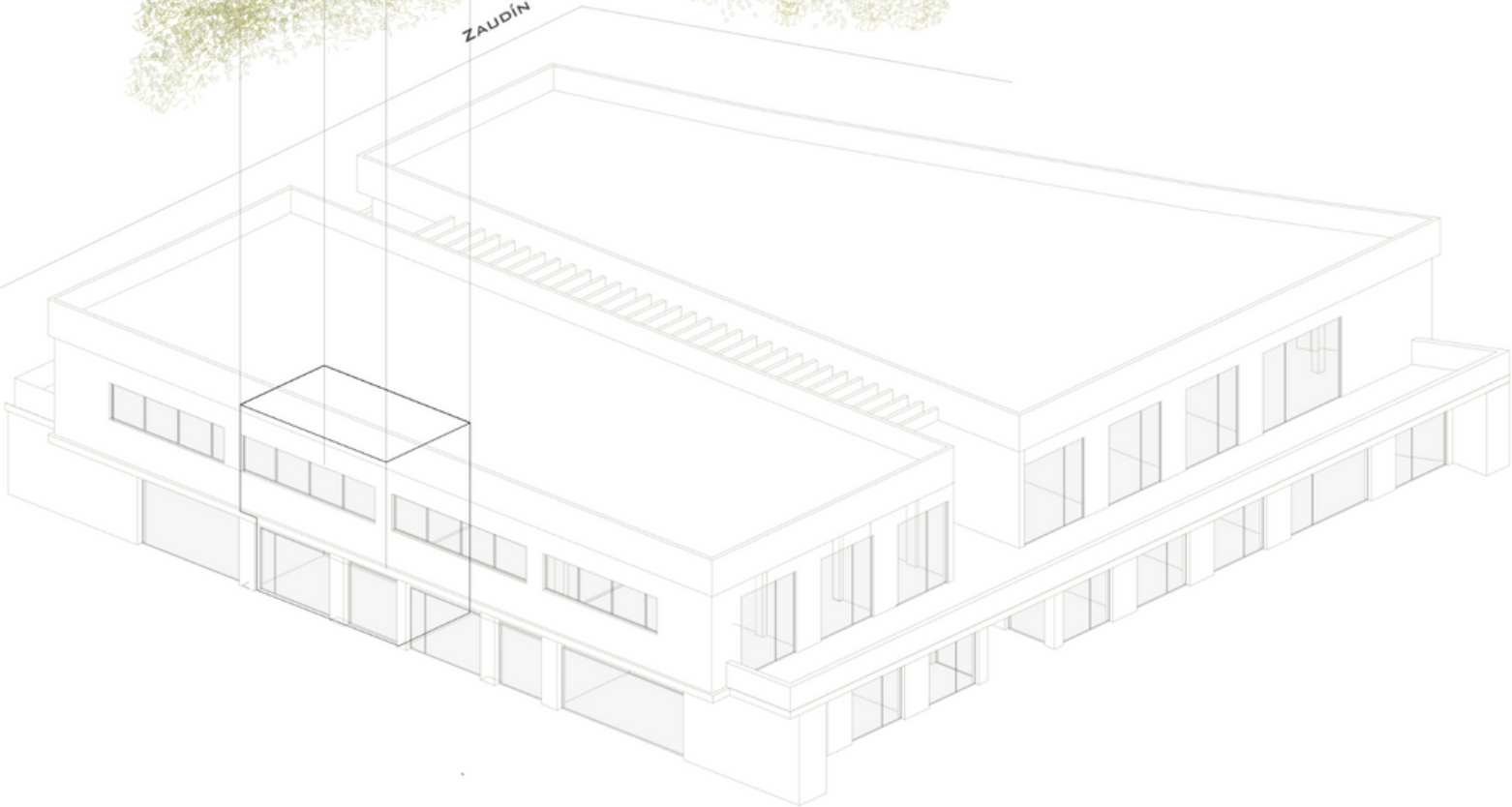


Zaudin Boulevard

VOLUMEN 3D



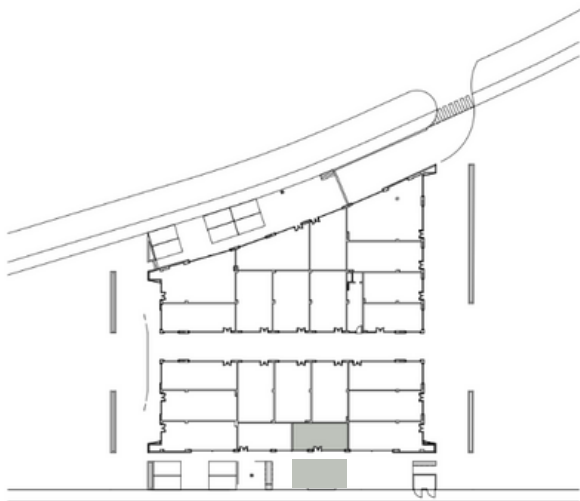
ZAUDIN



POLIGONO PISA

Zaudin Boulevard

Superficie total construida	98.96m²
Planta Baja	45.72m²
Planta Alta	53.24m²
Superficie útil	84.72m²
S. construida terraza planta baja	41.16m²



Planta Alta



Planta Baja

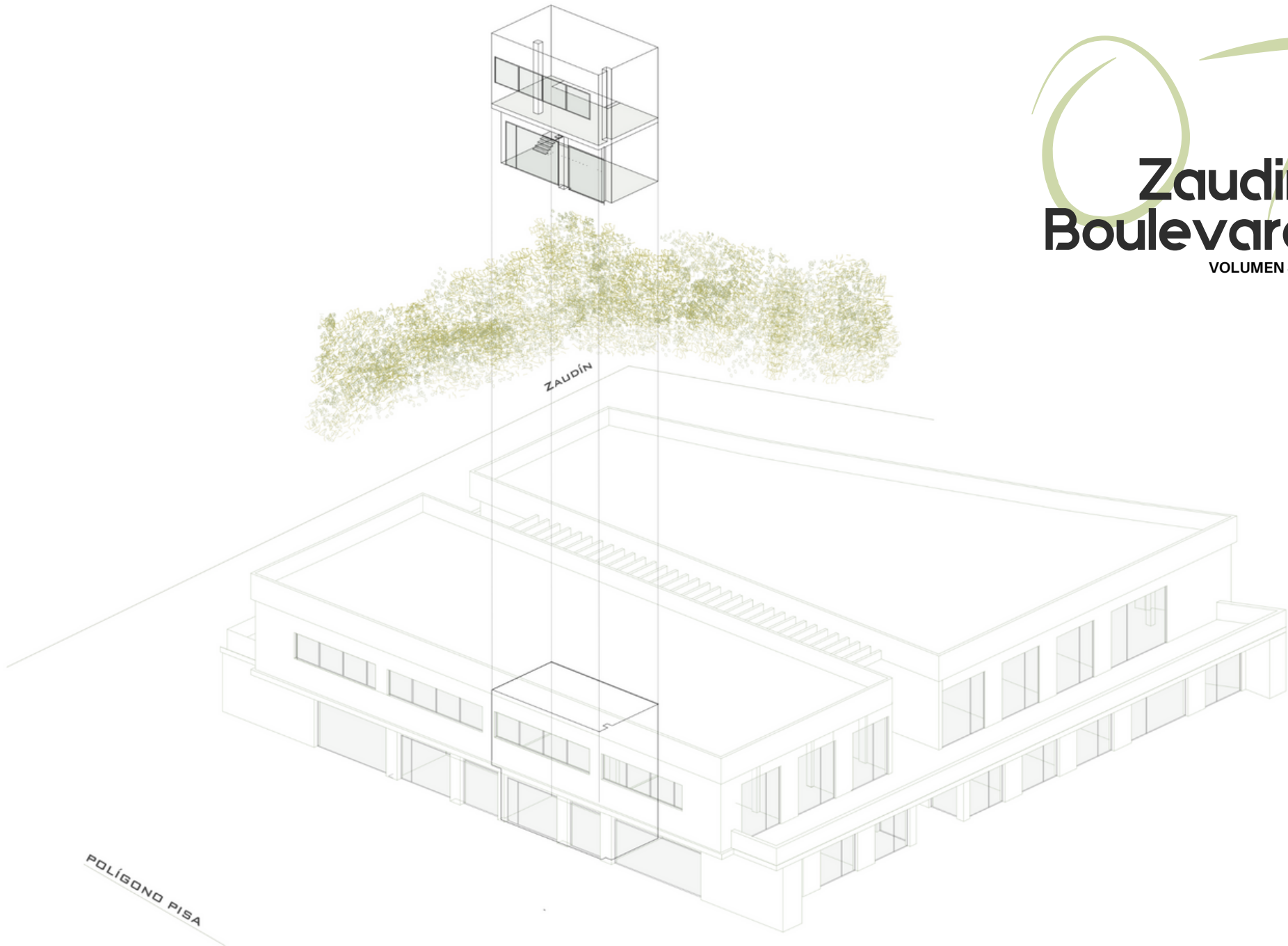


Escala 1:100
1 m 2 m 5 m



Zaudin Boulevard

VOLUMEN 3D



POLÍGONO PISA