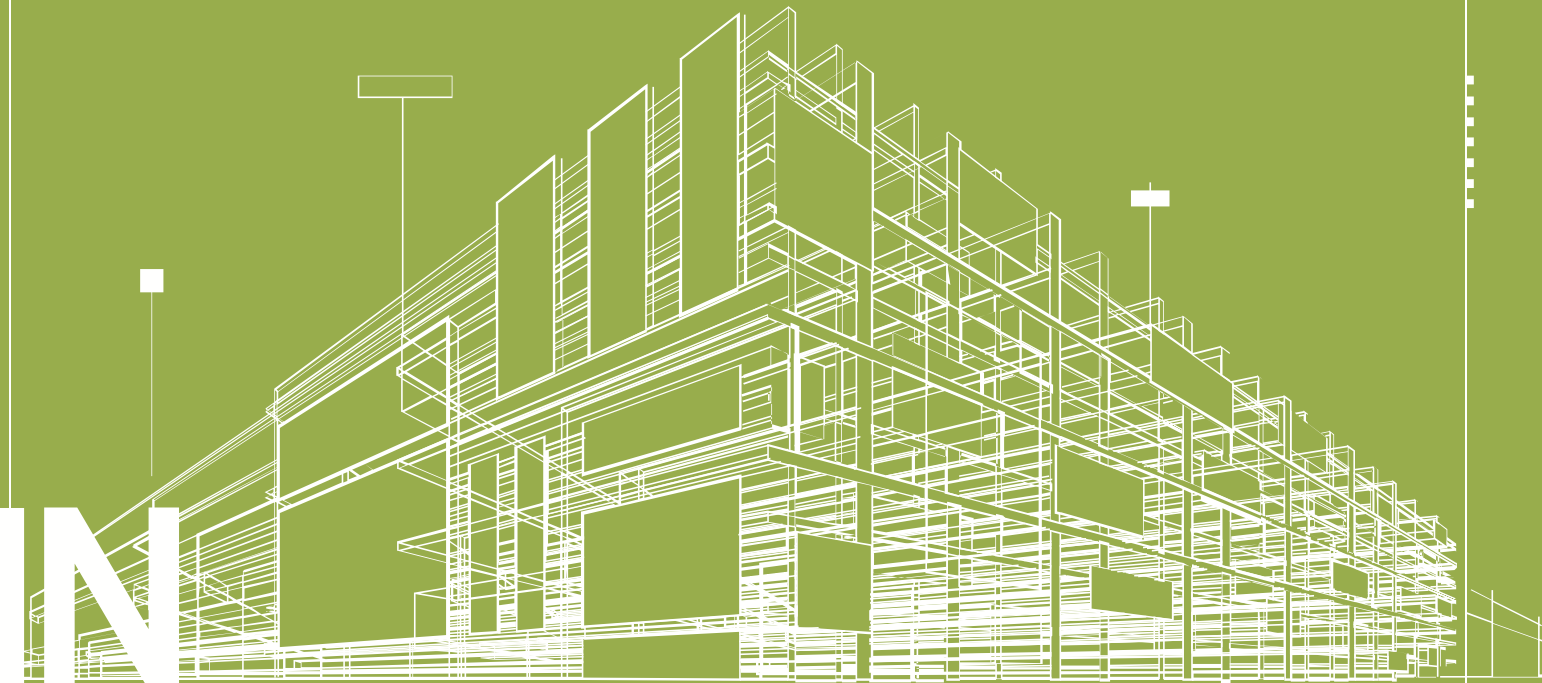


*Plano Comercial*

# ZAUDIN BOULEVARD



# Zaudin Boulevard

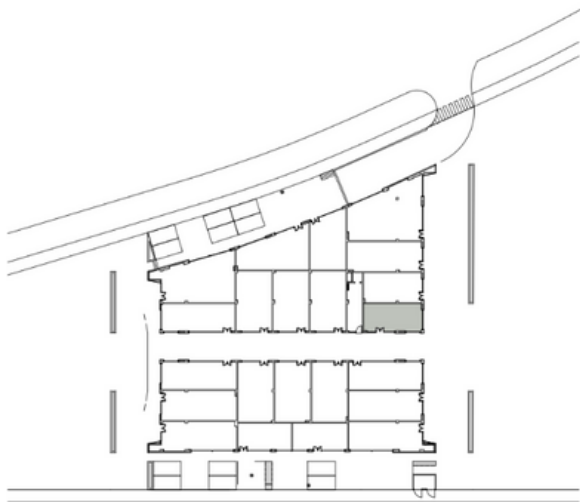
Superficie total construida **104.02m<sup>2</sup>**

Planta Baja **51.65m<sup>2</sup>**

Planta Alta **52.37m<sup>2</sup>**

Superficie útil **85.68m<sup>2</sup>**

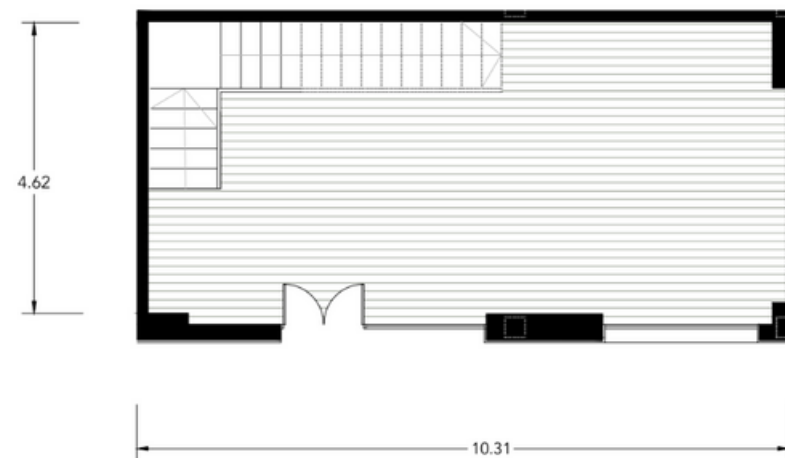
S. construida terraza planta Alta **31.95m<sup>2</sup>**



Planta Alta

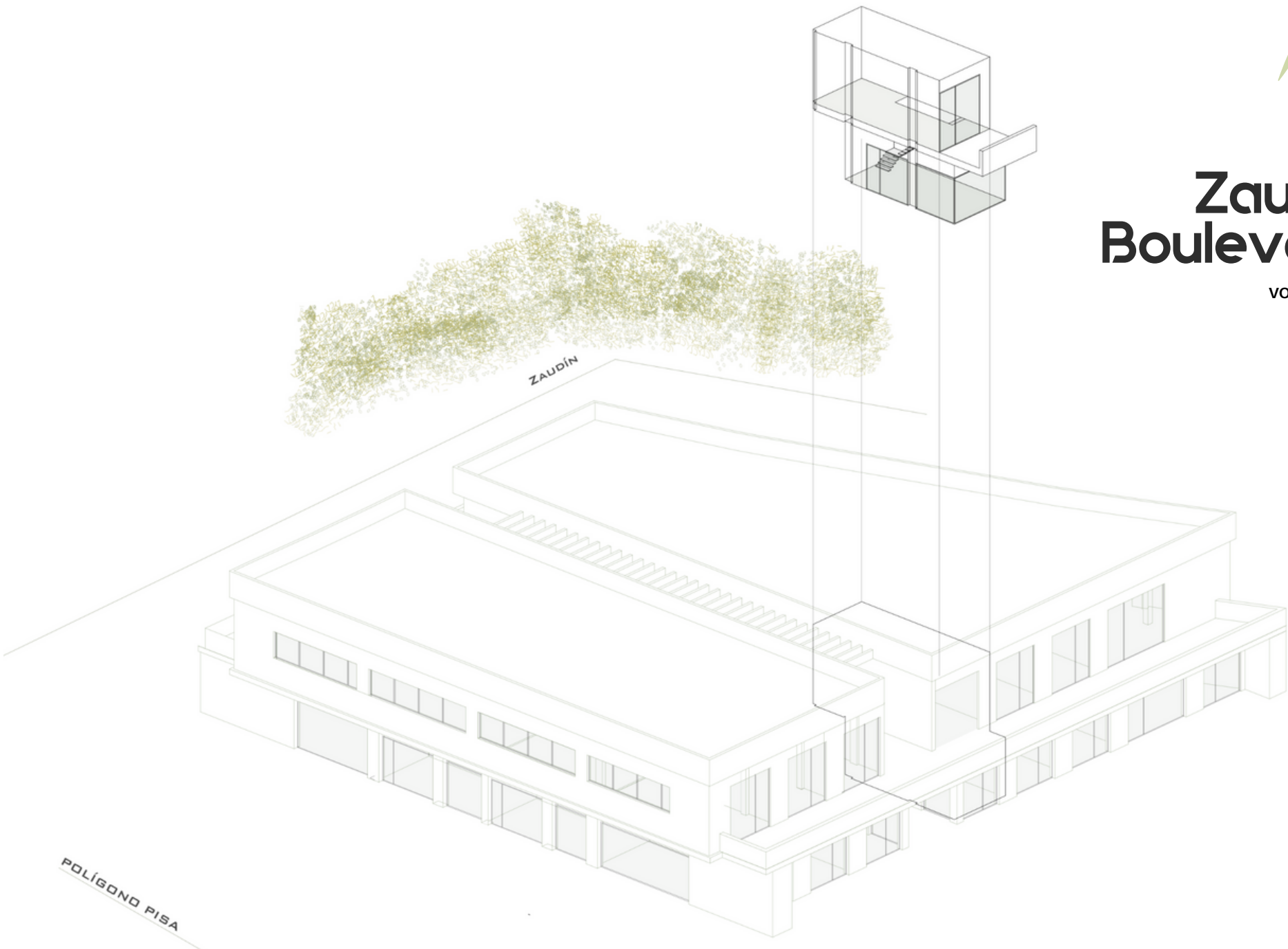


Planta Baja



Escala 1:100

1 m 2 m 5 m



ZAUDÍN



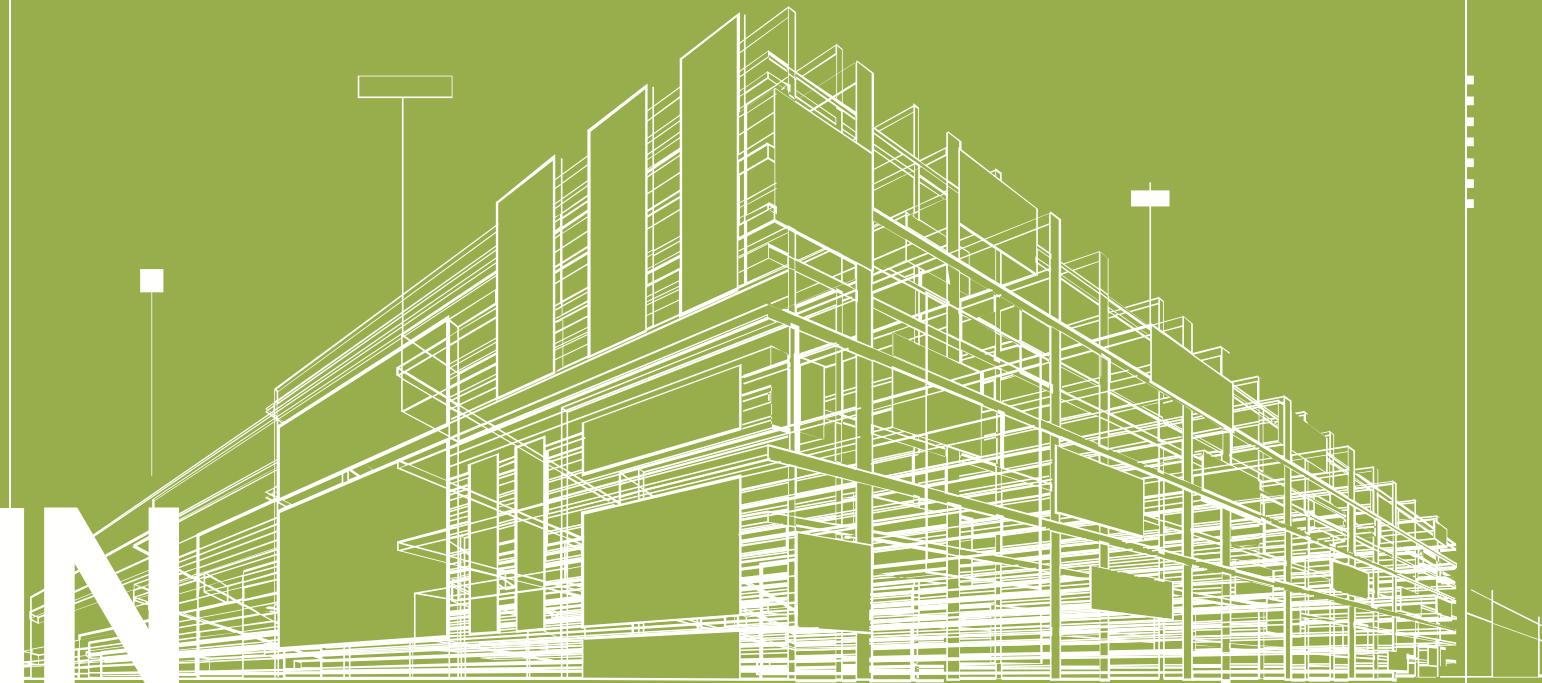
# Zaudin Boulevard

VOLUMEN 3D

POLÍGONO PISA

*Plano Comercial*

# ZAUDIN BOULEVARD



# Zaudin Boulevard

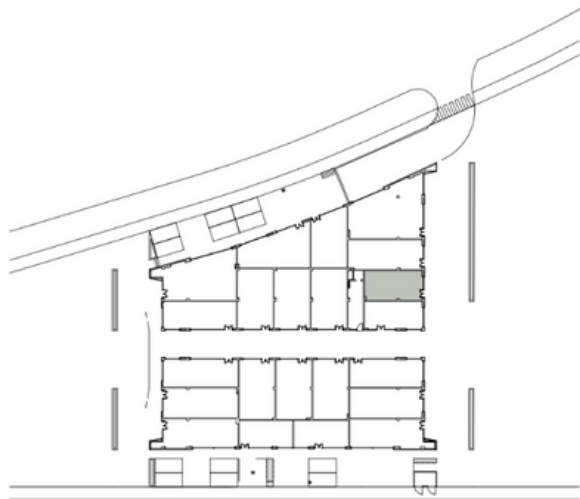
Superficie total construida **104.51m<sup>2</sup>**

Planta Baja **52.36m<sup>2</sup>**

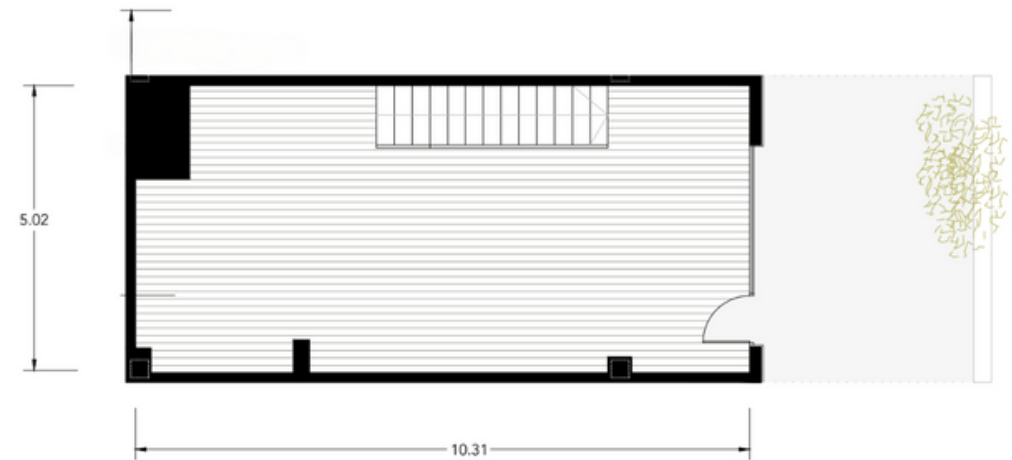
Planta Alta **52.15m<sup>2</sup>**

Superficie útil **90.47m<sup>2</sup>**

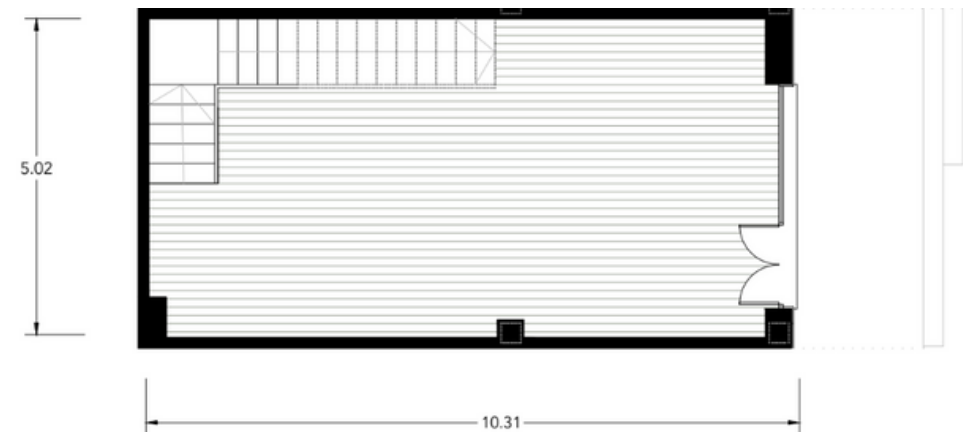
S. construida terraza planta Alta **19.08m<sup>2</sup>**



Planta Alta



Planta Baja



Escala 1:100  
1 m 2 m 5 m

# Zaudin Boulevard

VOLUMEN 3D

